

Nova - FEKA

Submersible Pumps for Drainage and Waste Water



Reinforced inert plastic body. Non-Corrosive for long life. Built in rigid float activated automatic switch. Factory set for reliable operation, eliminates float cable failure. Stainless steel shaft and screws corrosion resistant for longer life. Repairable - longer service life. Ball bearings longer life and quiet operation. Ground rotor shaft, triple lip seals in oil chamber longer seal and pump life. 2 Year DAB Pump Warranty.

Operating range: from 1 to 16 m³/h with head up to 10.2 metres

Liquid temperature range: from 0°C to +35° C for domestic use

Pumped liquid characteristics: NOVA fibre-less murky water. FEKA sewage water from septic tanks

Granulometric passage through the suction grid:

NOVA 180 – NOVA 200 5 mm
NOVA 300 – NOVA 600 10 mm
FEKA 600 25 mm

Min. suction depth:

NOVA 180 A 77 mm
NOVA 180 NA – NOVA 200 8 mm
NOVA 300 85 mm
NOVA 600 A – FEKA 600 A 175 mm
NOVA 600 NA – FEKA 600 NA 38 mm

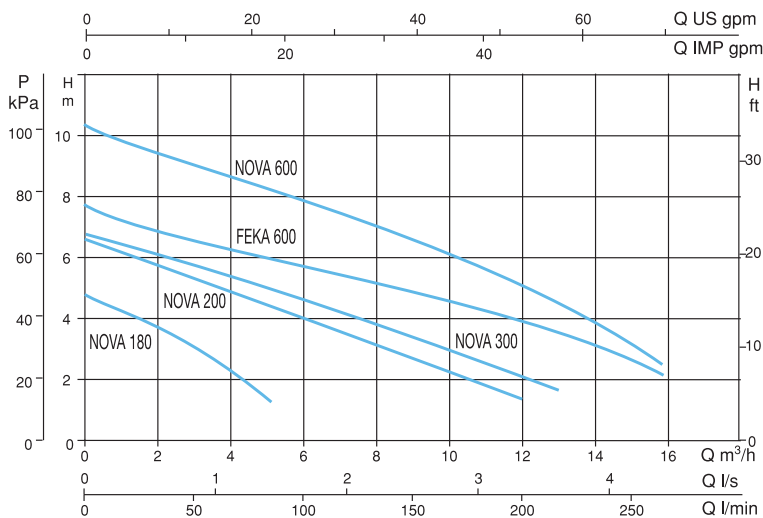
Maximum immersion depth: 7 metres

Maximum dry running time: 1 minute

Protection level: IP 68

Insulation class: F

HYDRAULIC DATA



MODEL	VOLTAGE 50 Hz	ELECTRICAL DATA					HYDRAULIC DATA																					
		P1 MAX kW	P2 NOMINAL		I _n A	CAPACITOR µF V _c	Q																					
			kW	HP			m ³ /h	l/min	0	1.2	2.4	3	3.6	4.5	5	6	7.5	9	12	12.9	15	15.9						
NOVA 180 A	1x220-240 V~	0.10	0.20	0.28	0.9	5	450	H (m)	4,8	4,2	3,5	3,15	2,4	1,4														
	1x220-240 V~	0.10	0.20	0.28	0.9	5	450		6,6	6,5	5,9	5,2	5,3	4,6	4,7	4	3,2	2,6	1,4									
NOVA 200	1x220-240 V~	0.35	0.22	0,3	1,5	8	450		6,8	6,7	6	5,86	5,6	5,1	5	4,6	4	3,4	2,2	1,8								
	1x220-240 V~	0.35	0.22	0,3	1,6	8	450		10,2	9,5	9,1	8,9	8,7	8,3	8,1	7,8	7,2	6,6	5	4,8	3,1	2,2						
NOVA 300 A	1x220-240 V~	0.35	0.22	0,3	1,6	8	450		7,45	7	6,6	6,45	6,3	6,1	5,9	5,7	5,35	4,95	4,1	3,9	2,8	2,2						
	1x220-240 V~	0.35	0.22	0,3	1,6	8	450																					
NOVA 600 A	1x220-240 V~	0.80	0.55	0,75	3,4	14	450																					
	3x400 V~	0.80	0.55	0,75	1,6	-	-																					
FEKA 600 A	1x220-240 V~	1.00	0.55	0,75	4,3	14	450																					
	3x400 V~	0.97	0.55	0,75	1,7	-	-																					

* With special stainless steel motor shaft.

Disclaimer: Every effort will be made to publish correct details in this brochure. No responsibility will be taken for any errors, omissions or changes. White International reserves the right to make any changes deemed necessary to specifications and performance in accordance with manufacturer's recommendations.





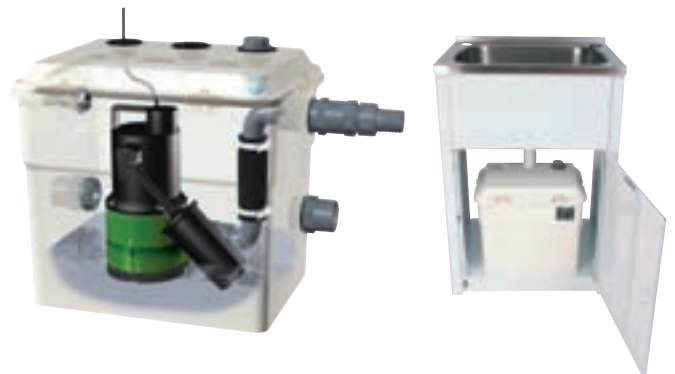
Under Hand Basin Pump Station Grey Water Pump Units



NOVABOX

- 30 litre capacity NOVA300 pump fitted
- Performance: Maximum Head: 6.9m, Max Flow: 120 l/min

Model/Part No.	Description
DAB-NOVABOX30/300M	30 litre NOVA300 pump fitted



Polyethylene Pump Stations

SERIES 90

90 litre under sink commercial and domestic automatic collecting station.

- 90 litre polyethylene container
- Available as a bare unit without a pump or pipework
- Available with a 240 volt automatic DAB-FEKA600A vortex pump plumbed including PVC pipework, barrel union and gate valve, 5 metre power lead, Flows up to 265 l/m. Heads up to 7 metres
- Available with a 240 volt automatic ZENIT-DGBLUE40/2/G40VMG cast iron vortex, pump plumbed including PVC pipework, barrel union and gate valve
10 metre power lead, flows up to 260 l/m, heads up to 6.5 metres.



Model/Part No.	Description
ZEN-SERIES90	90 Litre Empty Polyethylene Container
ZEN-SERIES90FEKA600A	90 Litre with DAB-FEKA600A Vortex FEKA Pump
ZEN-SERIES90DGBLUE40M	90 litre with ZEN-DGBLUE40/2/G40VMG Vortex Pump Station



DRENAG 1000-1200

Stainless Steel Submersible Pump



Pump body, impeller, motor flange, filter and filter cover, motor casing, outer casing with handle, cable compartment cover in **AISI 304 stainless steel**.
 Driving motor in **AISI 316 stainless steel**.
 Handle coated with insulating rubber
 Double mechanical seal with oil chamber interposed, carbon/alumina on motor side and silicon/silicon carbide on pump side. Dry motor, asynchronous, watertight, cooled by the pumped liquid itself. Standard thermal protection in the winding. Capacitor permanently on in the single-phase version. 10 metres of H07RN-F power cables with electric plug are supplied as a standard feature.

Operating range: from 3 to 28 m³/h with head up to 17 metres

Liquid temperature range: from 0°C to +50°C
 from 0°C to +35°C for domestic use

Pumped liquid characteristics: rain water, phreatic water, sandy water from building yards and clean waste waters, not aggressive.

Maximum working temperature: +40°C with the motor out of the water

Granulometric passage through the suction grid: 10 mm

Maximum immersion depth: 10 metres

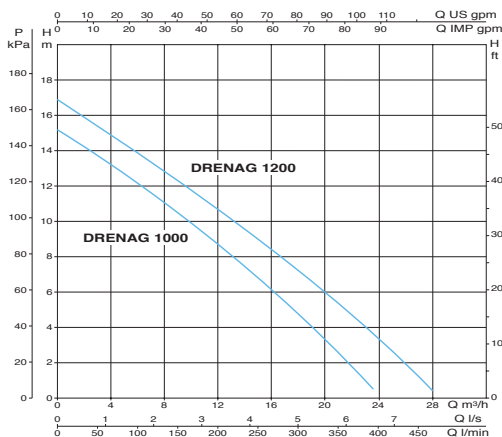
Protection level: IP 68

Insulation class: F

Installation: fixed or portable, in a vertical or horizontal position.

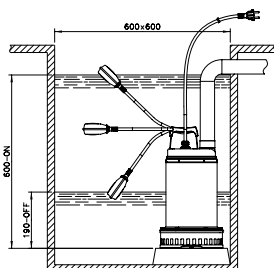


ELECTRICAL AND HYDRAULIC DATA

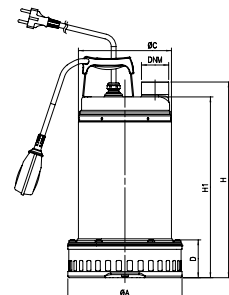


MODELLO	ELECTRICAL DATA					HYDRAULIC DATA												
	VOLTAGE 50 Hz	P1 MAX kW	P2 NOMINAL kW	In A	CAPACITOR μF Vc	Q m ³ /h l/min	0	3	6	9	12	15	18	21	23,5	28		
DRENAG 1000 MA	1x220-240 V ~	1,29	1	1,36	6	25	450	H (m)	15,3	13,7	12,1	10,5	8,7	6,8	4,7	2,4	0,5	
	3x400 V ~	1,18	1	1,36	2,43	—	—		—	—	—	—	—	—	—	—	—	—
DRENAG 1200 MA	1x220-240 V ~	1,85	1,2	1,6	7,5	30	450	H (m)	17	15,4	13,8	12,4	10,7	9	7,3	5,2	3,5	0,4
	3x400 V ~	1,65	1,2	1,6	3,24	—	—		—	—	—	—	—	—	—	—	—	—

INSTALLATION



DIMENSIONS AND WEIGHTS



Disclaimer: Every effort will be made to publish correct details in this brochure. No responsibility will be taken for any errors, omissions or changes. White International reserves the right to make any changes deemed necessary to specifications and performance in accordance with manufacturer's recommendations.

0800 509 506





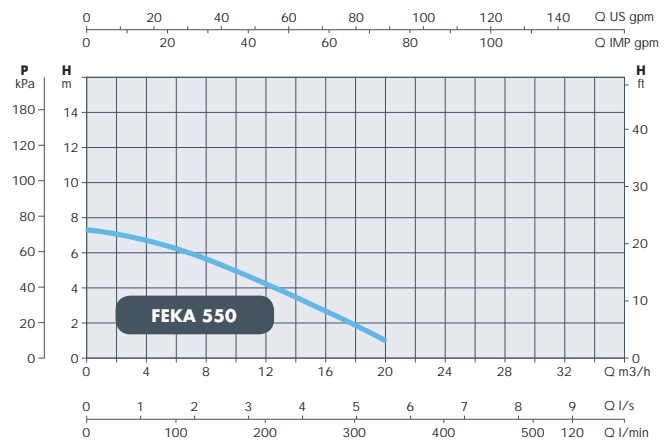
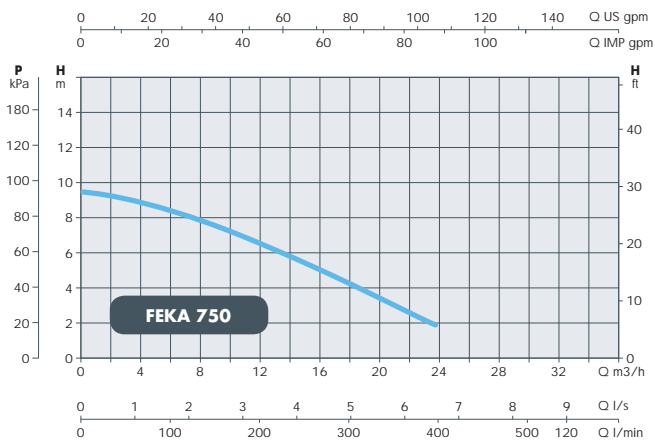
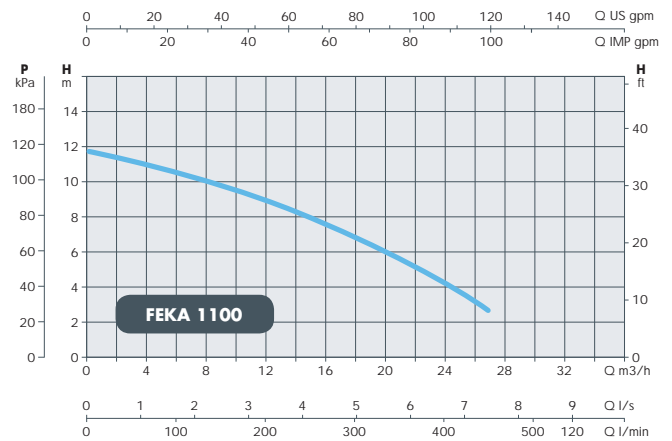
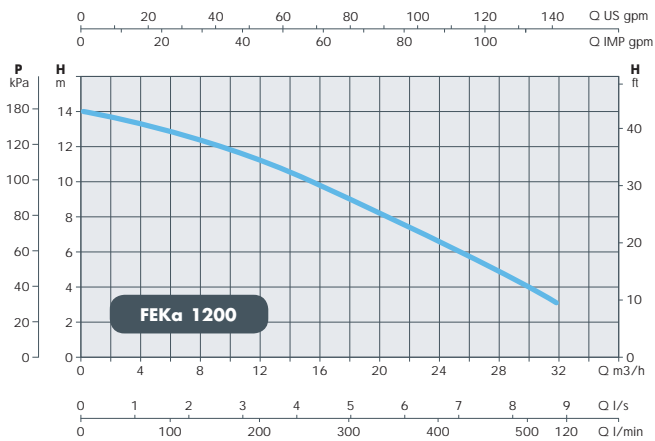
Feka Submersible Centrifugal Stainless Steel Vortex Pumps



- Continuously rated
- Designed to pump soft, non-abrasive solids to 50 mm
- Cable Length: 10 metres
- Double mechanical seal with interposed oil chamber (non-toxic oil)
- Suitable for pumping sewer and waste water with solids up to 50mm
- 2 Year DAB Pump Parts and Labour Warranty



Model/Part No.	Description
DAB-FEKA550MA	0.55 kW, 0.75 hp, 240V max.flow: 330, max.head: 7.4
DAB-FEKA750MA	0.75 kW, 1.0 hp, 240V max.flow: 400, max.head: 9.6
DAB-FEKA1000MA	1.0 kW, 1.36 hp, 240V max.flow: 450, max.head: 11.8
DAB-FEKA1200MA	1.2 kW, 1.6 hp, 240V max.flow: 533, max.head: 14.0



Disclaimer: Every effort will be made to publish correct details in this brochure. No responsibility will be taken for any errors, omissions or changes. White International reserves the right to make any changes deemed necessary to specifications and performance in accordance with manufacturer's recommendations.