

# NOVABOX

## AUTOMATIC COLLECTION AND LIFTING STATIONS



### TECHNICAL DATA

**Operating range:**

from 1 to 7,2 m<sup>3</sup>/h with head up to 6,9 metres.

**Liquid temperature range:**

+ 50 °C.

+ 90 °C for a maximum time of 3 minutes.

**Pumped liquid:**

waste water without solid and/or fibrous matter.

**Protection class of the motor and the pump:** IP 68.

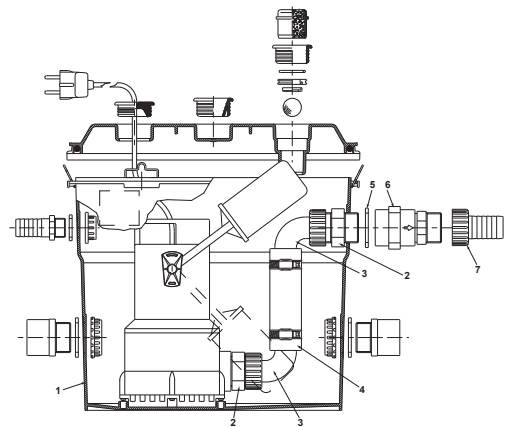
**Motor isolation rating:** F.

### APPLICATIONS

Stations for the collection and lifting of domestic waste water from the bath, sink, shower, and washing machine in basements, or below the sewer network in general. They consist of a NOVA 300 pump with 5 metre power input cable and plug fitted on a technopolymer plate, 30 litre technopolymer tank, check valve on the delivery. The lifting station is supplied with pump with connection kit and shower float kit.

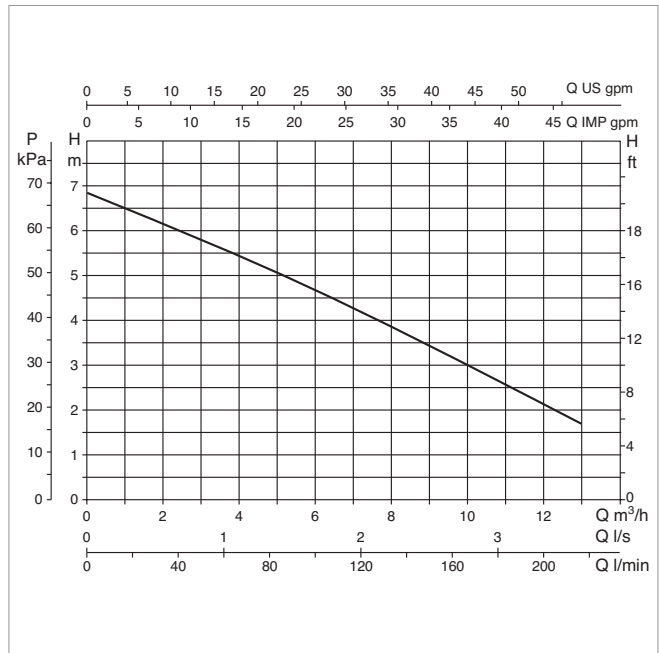
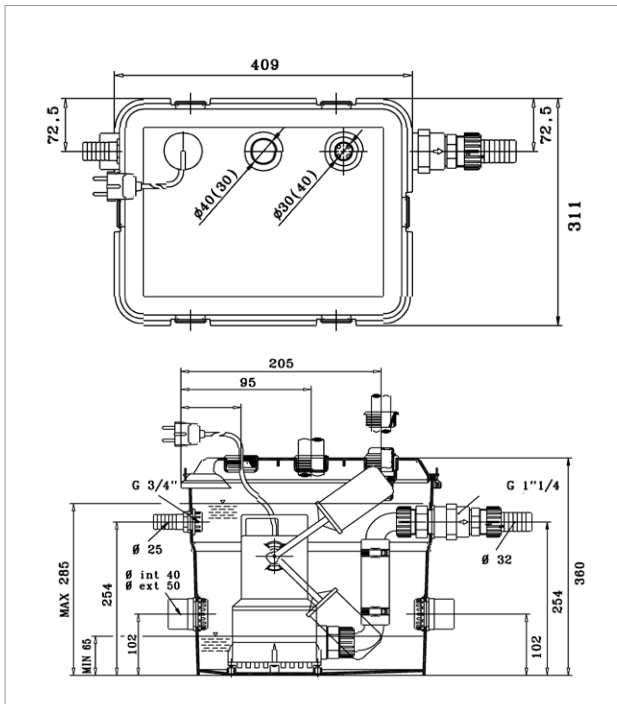
### MATERIALS

N.	PARTS	MATERIALS
1	TANK	TECHNOPOLYMER
2	NIPPLE	TECHNOPOLYMER
3	RUBBER HOLDER	TECHNOPOLYMER
4	PIPE	RUBBER
5	OR RING	EPDM
6	NON-RETURN VALVE	TECHNOPOLYMER
7	RUBBER HOLDER	TECHNOPOLYMER



# NOVABOX - AUTOMATIC WASTE WATER DRAINING COLLECTION AND LIFTING STATIONS

Liquid temperature range: from +50 °C to +90 °C for a maximum time of 3 minutes



The performance curves are based on kinematic viscosity values = 1 mm<sup>2</sup>/s and density equal to 1000 kg/m<sup>3</sup>. Curve tolerance according to ISO 9906.

MODEL	ELECTRICAL DATA						
	POWER INPUT 50 Hz	P1 MAX kW	P2 NOMINAL		I <sub>n</sub> A	CAPACITOR	
			kW	HP		µF	Vc
NOVABOX 30/300.1M	1 x 220-240 V ~	0.29	0.22	0.3	1.3	8	450
NOVABOX 30/300.1M-SV	1 x 220-240 V ~	0.29	0.22	0.3	1.3	-	-

MODEL	A	B	C	D	E	F	H	H1	H2	PACKING DIMENSIONS			VOLUME (m <sup>3</sup> )	WEIGHT kg
										L/A	L/B	H		
NOVABOX 30/300.1M	407	309	94	204	314	72	360	100	254	45	33	38	0.056	9.2